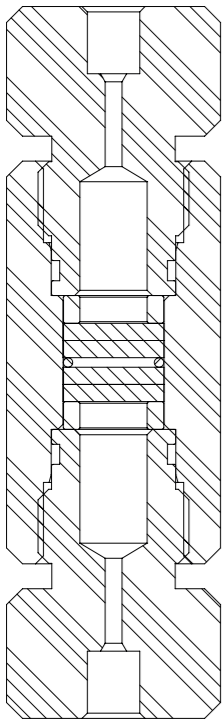




FILTERS



Filtre (F-1/4)



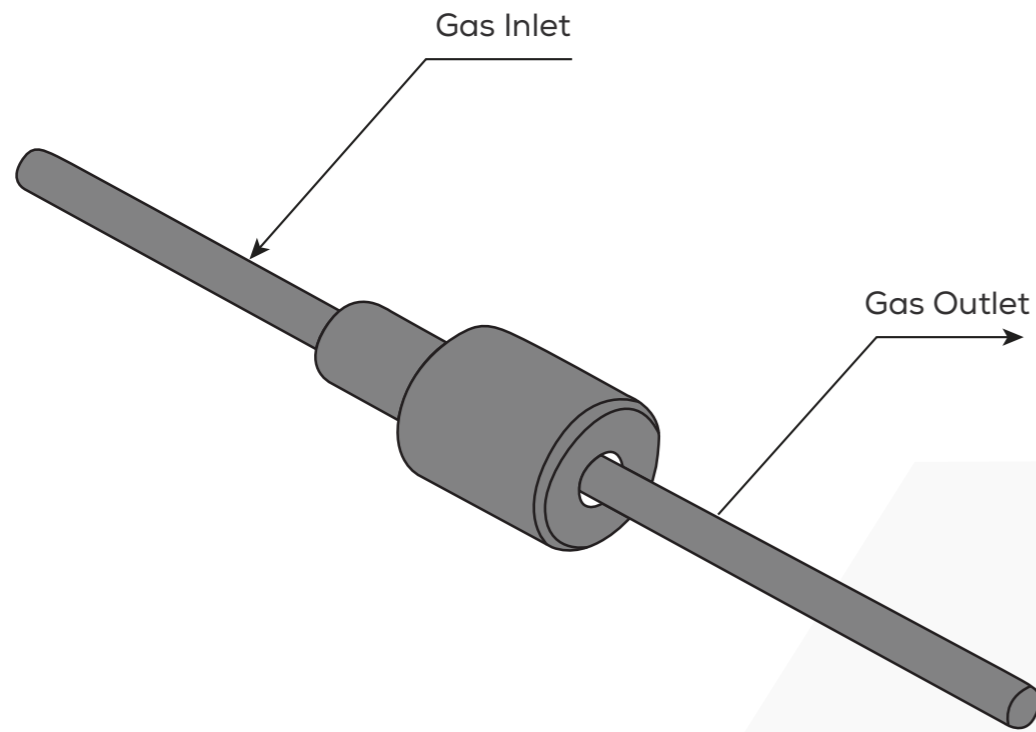
SPECIFICATIONS

- One way Flow
- Stainless Steel Body Structure
- When unpacked without the need for cleaning DEF/STAN In accordance with the 58/96, does not impair the purity of the fluid passing through it

TECHNICAL SPECIFICATIONS

- Temperature of Endurance: $-45^{\circ}\text{C}/+80^{\circ}\text{C}$
- Working Temperature: $-40^{\circ}\text{C}/+60^{\circ}\text{C}$
- Maximum Working Pressure: 1000 bar
- Minimum Withstand Pressure: 1400 bar
- Pneumatic Connection Type: LF4 Gland + Collar
- Mechanical Connection Interface: Above the Line
- Weight: 900 gr
- Filtering Capacity: 5 Micron

Mini Filtre (MF-L1-L2)

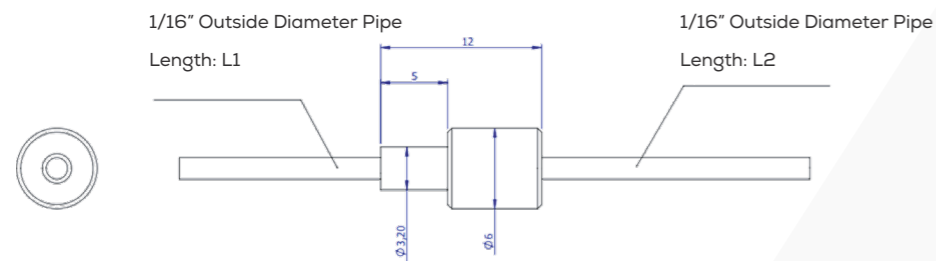


SPECIFICATIONS

- One way Flow
- Stainless Steel Body Structure
- When unpacked without the need for cleaning DEF/STAN In accordance with the 58/96, does not impair the purity of the fluid passing through it

TECHNICAL SPECIFICATIONS

- Temperature of Endurance: $-45^{\circ}\text{C}/+150^{\circ}\text{C}$
- Working Temperature: $-40^{\circ}\text{C}/+60^{\circ}\text{C}$
- Maximum Working Pressure: 690 bar
- Minimum Withstand Pressure: 1000 bar
- Pneumatic Connection Type: 1/16" Outside Diameter Pipe
- Mechanical Connection Interface: Above the Line
- Weight: 3 gr
- Filtering Capacity: 10 Micron



Contact us



Address

Logos Kimya Teknolojileri Sanayi ve Ticaret Ltd. Őti.
OSTİM Mah. 1151. Sk 1/64 Gül 86 Sitesi Yenimahalle ANKARA

Contact

Phone: +0(312) 385 20 82
Email: info@logoskimya.com
Web: logoskimya.com